



# TranStar II

Utility Inspection Transporter

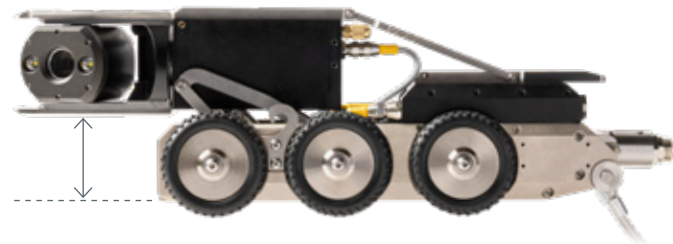
# TranStar II

## Utility Inspection Transporter

### THE MOST POWERFUL TRACTOR OF ITS SIZE IN THE INDUSTRY.

At just 14 inches in length, the steerable TranStar II is a powerhouse in a small package. It's equipped with dual, 90-watt motors featuring three forward speeds, reverse and free-wheel for rapid retrieval.

**Four inches of rise for extended camera view.**



### Options

- Axle extensions for large-pipe inspection.
- Multiple wheel sets for optimum combination of height and traction in any pipe.
- 512Hz pigtail beacon (sonde).

### General Features

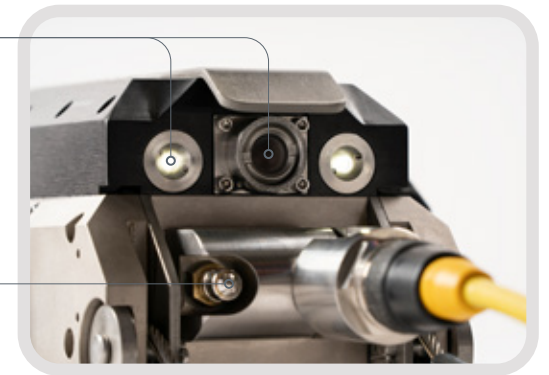
- Functions on up to 2,000 feet of cable.
- Three forward speeds, reverse and freewheel.
- Full steering allows unit to rotate on its own axis, making it extremely maneuverable.
- Motorized elevator systems.
- Single-conductor technology for significant cost and performance advantages over multi-conductor technology through interchangeability of components, backwards and forwards compatibility, and reduced downtime.
- Water resistant per IP68 requirements.

6"-24" diameter pipe

**SinCon cable features a 5,400-pound breaking strength (versus 500 to 2,000 pounds for multi-conductor cable).**

### Rear View

Integrated rear-view color camera with LEDs.



Easy-access pressure ports for convenient leakage testing.

Stainless-steel skids protect from pipe joints which could snag or flip unit.

Tilt-up connector reduces wear and tear on pigtail connection.

Integrated rollers to assist tractor over offsets during retrieval.

Durable, 1/8-inch stainless-steel aircraft cable bridle for secure unit retrieval.

Dual 90-watt motors deliver more power than any other tractor of its size.

Pan and rotate axis are clutched to protect against impact damage to gear train and motors.

Single-bolt mounting point for quick wheel removal and installation.

Lifting hooks for easy deployment and retrieval.

### Available Camera

- High-resolution video (2.38 megapixel) with a total zoom of 120:1 (10X optical and 12X digital).
- Integrated pan/tilt head with 270° of pan and 340° of rotation for full 360° inspection capabilities.
- Programmable pan and rotate limits with on-screen instructions.
- Internal pressure and humidity sensors and internal clock with startup counter.

- Scratch-resistant sapphire window cover for durability.
- Adjustable, ultra-bright LED dual light array (1,300 total lumens) with remote-controlled settings allows inspection of pipes up to 48" without additional lights.
- Home function to return camera head to straight-ahead position.
- Optional inclinometer and integrated lasers for crack measurement.

### Available Wheels

#### TrakStar II



The compact, microprocessor-controlled TrakStar II has all the features and benefits of the TrakStar camera in half the size.



Standard



Knobby Balloon



MegaTrak  
2.7" / 3.3" / 4.5"



Pneumatics  
6"



Hi-Trak Casters

# TRANSPORTER SPECIFICATIONS



	mighty mini	LATERAL LAUNCH	TRANSTAR II	TRANSTAR	PROTRAK	STORM DRAIN
PIPE SIZES	4" to 12"	6" to 24"	6" to 24"	6" to 30"	6" (relined) to 30"	24" and up
STEERABLE	-	-	✓	✓	-	✓
ELEVATOR	✓ (manual)	✓	✓	✓	-	✓
WEIGHT (w/o camera)	15 lbs	42.5 lbs	30 lbs	37.5 lbs	33 lbs	100 lbs
LENGTH (w/o camera)	11"	32"	14"	19"	27"	36"
SPEEDS (Forward/Reverse)	3/1/freewheel	3/1/freewheel	3/1/freewheel	3/1/freewheel	3/1/freewheel	3/1/freewheel
MOTOR/POWER	90W	90W	2 x 90W	2 x 90W	150W	125W

**The industry's ONLY CABLE WARRANTY—5 YEARS**  
**The industry's ONLY 2-YEAR TRANSPORTER WARRANTY**

## More Than 30 Years of Innovation.

Our inspection system technology traces its roots back three decades with many innovative “firsts” to the marketplace.

- ⌘ First mainline color camera featuring internal lights.
- ⌘ First U.S. manufacturer to build a true pan-and-tilt camera with tracking lights.
- ⌘ First to manufacture cable reels that offer “electrical gear selection” and a true freewheeling cable drum.
- ⌘ First tractor design to provide freewheeling for rapid return.
- ⌘ First to design an electronic circuit to double tractor torque without increasing supply current.
- ⌘ First to introduce a steerable storm drain tractor or large pipeline tractor.
- ⌘ First U.S. company to design an explosion-proof camera and tractor approved for Class I Division I applications.
- ⌘ First to design a universal tap-cutting control system for single-conductor camera systems.
- ⌘ First to design single conductor laser and sonar profiling systems.
- ⌘ First manufacturer to produce a single conductor panomorphoc camera system.

To find a Utility Inspection System dealer near you, visit [subsite.com/find-a-dealer](https://www.subsite.com/find-a-dealer).

